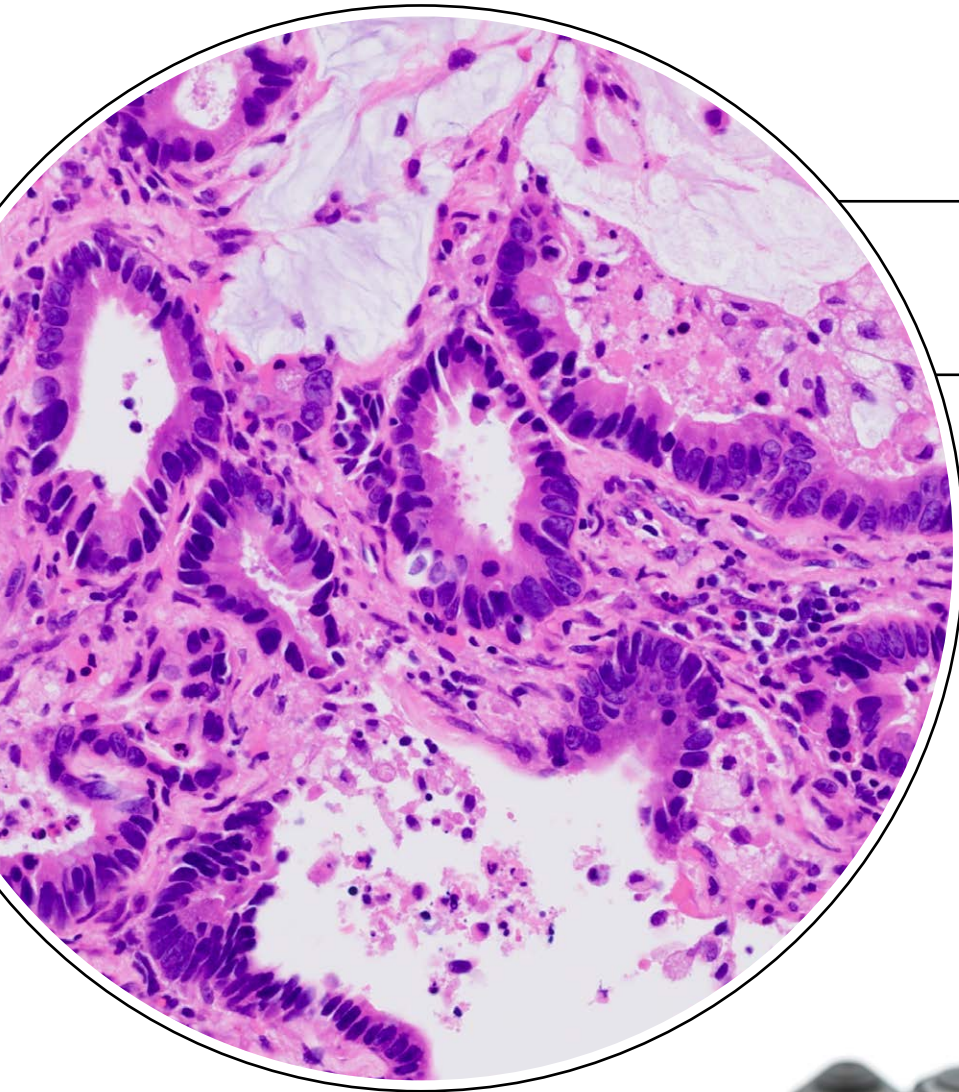


X Line: Breaking Barriers



Flatness

Expanded flatness with consistent sharpness, from the center to the edge

Chromatic Aberration

Exceptional color accuracy during brightfield and multicolor fluorescence imaging

Numerical Aperture

Improved brightness, resolution, and clear fluorescence images

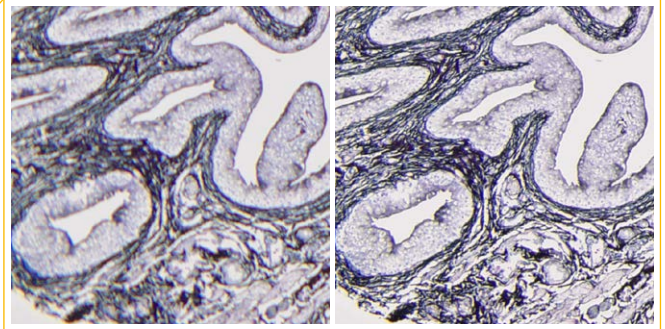
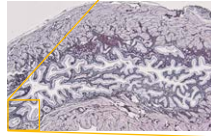
Olympus' revolutionary polishing technology delivers ultra-thin lenses at the core of every X Line high-performance objective.



Precise Image Acquisition for Routine Sample Observation

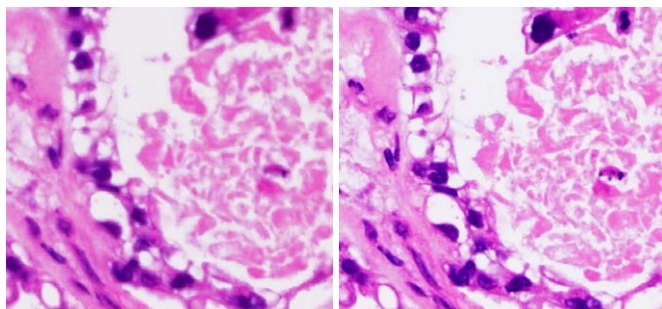
Expanded Flatness

Conventional objectives have good image quality in the center, but the edges are out of focus. X Line objectives offer uniform image quality from the center all the way to the edge, even with a large field of view. If you're stitching images together, the improved flatness delivers much clearer wide-area images.



Conventional objectives

X Line



Conventional objectives

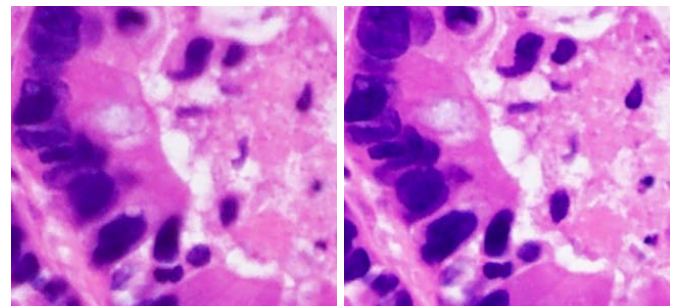
X Line

Exceptional Color Accuracy

With chromatic aberration correction from 400 to 1000 nm, X Line objectives deliver better color accuracy. For laboratory applications, the objectives suppress the violet aberration, making white clear and pink more vivid for improved contrast.

Excellent Image Quality

X Line objectives' high numerical aperture (NA) enables them to gather more light for brighter, higher resolution images.



Conventional objectives

X Line

Selection Guide for X Line Objectives

Objectives	Numerical Apertures	Working Distance (mm)	Chromatic Correction Wavelength (nm)
UPLXAPO4X	0.16	13	400-1000
UPLXAPO10X	0.4	3.1	400-1000
UPLXAPO20X	0.8	0.6	400-1000
UPLXAPO40X	0.95	0.18	400-1000
UPLXAPO40XO	1.4	0.13	400-1000

Objectives	Numerical Apertures	Working Distance (mm)	Chromatic Correction Wavelength (nm)
UPLXAPO60XO	1.42	0.15	400-1000
UPLXAPO100XO	1.45	0.13	400-1000
UPLXAPO60XOPH	1.42	0.15	400-1000
UPLXAPO100XOPH	1.45	0.13	400-1000

- OLYMPUS CORPORATION is ISO14001 certified.
- OLYMPUS CORPORATION is ISO9001 certified.
- Illumination devices for microscope have suggested lifetimes. Periodic inspections are required. Please visit our website for details.

- All company and product names are registered trademarks and/or trademarks of their respective owners.
- Images on the PC monitors are simulated.
- Specifications and appearances are subject to change without any notice or obligation on the part of the manufacturer.

www.olympus-lifescience.com/landing/objectives

OLYMPUS[®]

OLYMPUS CORPORATION
Shinjuku Monolith, 2-3-1 Nishi-Shinjuku, Shinjuku-ku, Tokyo 163-0914, Japan