

MAG 50 and 50/FR Series

MPI Test Bench Unit

The Magnaflux MAG 50 and MAG 50/FR are heavy-duty machines designed for the inspection of ferrous components. There are numerous options in both ranges and all units come with separate power packs and stainless steel tanks.

MAG 50



MAG 50/FR



PRODUCT PROPERTIES

	50/3H	50/5H	50/6FR	50/10FR	50/15FR
Maximum output current	3,000 Amps and Half Wave DC	5,000 Amps and Half Wave DC	6,000 Amps, Full Wave and Half Wave DC	10,000 Amps Full Wave DC	15,000 Amps Full Wave DC
Line current draw for duration of maximum current shot	170 Amps	270 Amps	110 Amps	340 Amps	440 Amps
Demagnetisation	Decaying AC	Decaying AC	Reversing DC	Reversing DC	Reversing DC
Typical duty cycle	1.5 seconds 'ON', 15 seconds 'OFF'	1.5 seconds 'ON', 15 seconds 'OFF'	1 second 'ON', 10 seconds 'OFF'	1 second 'ON', 10 seconds 'OFF'	1 second 'ON', 30 seconds 'OFF'
Mains electricity supply	380 or 415 Volts, 50 Hz, 1 Ph	380 or 415 Volts, 50 Hz, 1 Ph	380 or 415 Volts, 50 Hz, 3 Ph	380 or 415 Volts, 50 Hz, 3 Ph	380 or 415 Volts, 50 Hz, 3 Ph
Current control	Infinitely variable				
Magnetising coil	300, 400, 500 and 625 mm (other sizes available on request)				
Compressed air line	Minimum 5 bar (customer to provide regulator)				

All units carry the CE mark and conform to the appropriate EU directives.

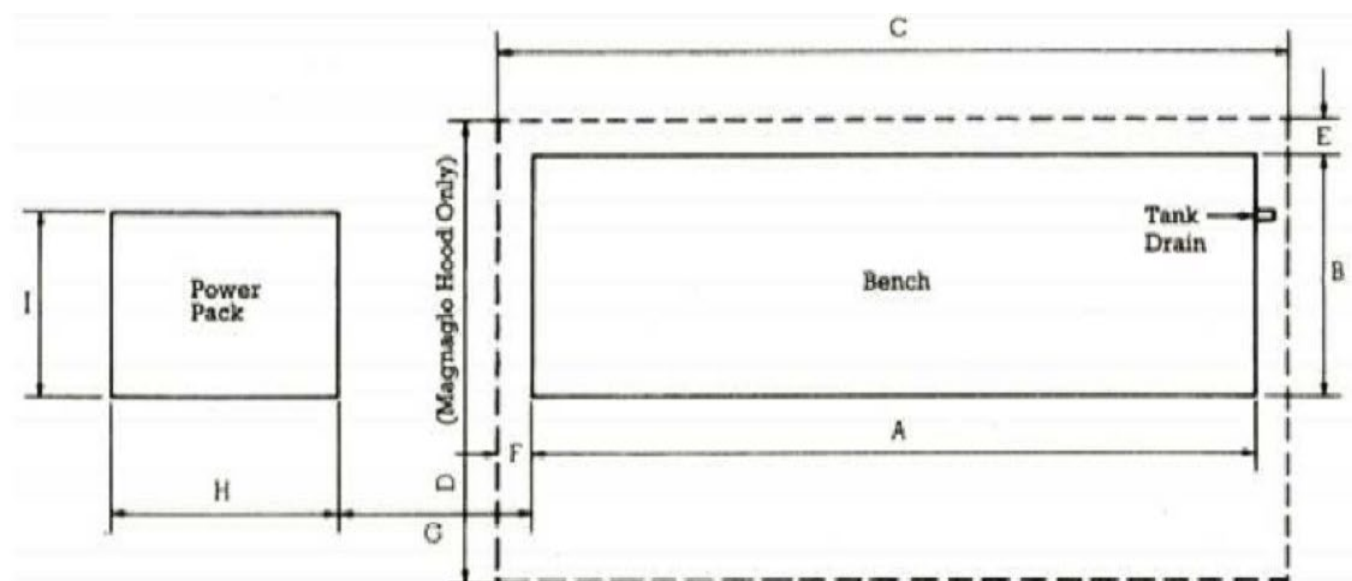
MAG 50 and 50/FR Series

DIMENSIONS - MAG 50 SERIES

Unit	Max. component length (mm)	Dimensions (mm)									Tank height (mm)	Power pack height (mm)	Tank capacity
		A	B	C	D	E	F	G	H	I			
MAG 50/___/15	1,500	2,250	775	2,650	1,500	200	200	300	850	750	1,060	1,370	50 litres
MAG 50/___/20	2,000	2,820	775	3,220	1,500	200	200	300	850	750	1,060	1,370	60 litres
MAG 50/___/25	2,500	3,295	775	3,695	1,500	200	200	300	850	750	1,060	1,370	70 litres

DIMENSIONS - MAG 50/FR SERIES

Unit	Max. component length (mm)	Dimensions (mm)									Tank height (mm)	Power pack height (mm)	Tank capacity
		A	B	C	D	E	F	G	H	I			
MAG 50/___/15	1,500	2,250	775	2,650	1,500	200	200	300	1,200	850	1,060	2,100	50 litres
MAG 50/___/20	2,000	2,820	775	3,220	1,500	200	200	300	1,200	850	1,060	2,100	60 litres
MAG 50/___/25	2,500	3,295	775	3,695	1,500	200	200	300	1,200	850	1,060	2,100	70 litres
MAG 50/___/30	3,000	3,800	775	4,495	1,500	200	200	300	1,200	850	1,060	2,100	80 litres
MAG 50/___/35	3,500	4,300	775	4,995	1,500	200	200	300	1,200	850	1,060	2,100	90 litres
MAG 50/___/40	4,000	4,800	775	5,495	1,500	200	200	300	1,200	850	1,060	2,100	100 litres



MAG 50 and 50/FR Series

USER RECOMMENDATIONS

Accessories	Steady Rests (20978A1, 20955A3) Small Parts Adaptor (030C009) Magnetic flow (flux) heads (on request) Magnaglo hood (011H018, 011H019, 011H020) Motorised tailstock adjustment (032T002) Hand crank tailstock adjustment (032T001) Air pressure regulator and gauge (004P144) Rear hard wood grille (007G019)
--------------------	---

PART NUMBERS

MAG 50/3H/15	007E224
MAG 50/3H/20	007E225
MAG 50/3H/25	007E226
MAG 50/5H/15	007E228
MAG 50/5H/20	007E229
MAG 50/5H/25	007E230
MAG 50/6FR/15	007E236
MAG 50/6FR/20	007E237
MAG 50/6FR/25	007E238